

# TENOR SAXOPHONE

6. *f*

10. *p* (8)

14. *f*

19. *mf* (17) *mp*

23. *p*

29. (26)

33. *p*

37. (34) *p*

37.

41. (42) 6 (51)

52. 4 2 (59)

61.

65.

69.

72.

75.

79.

(82) 5 (90)

Tenor Sax (p.2)

92.

97.

(101) *f*

111. (117) *mf*

119.

124. (125) 6 2

136.

140. *f* *p cresc.*

143.

146. *f*

*f* Tenor Sax (p. 3)

150.

(15b)

(16b)

170.

(174)

177.

11.

(21)

Tenor Sax (p. 4)

30. (32)

37.

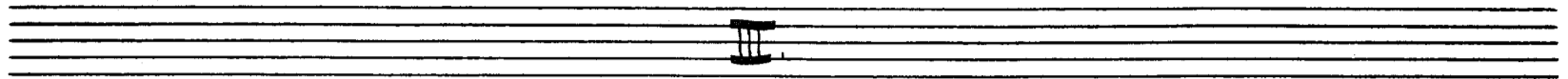
42. (47)

48.

53.

59.

Tenor Sax (p.5)



7.



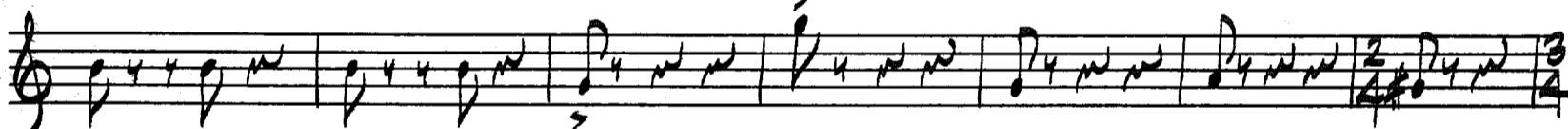
14.



20.



27.



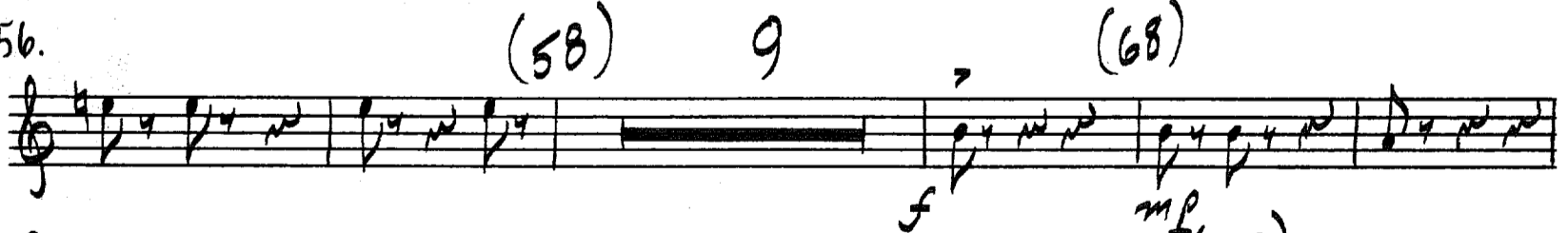
(34)



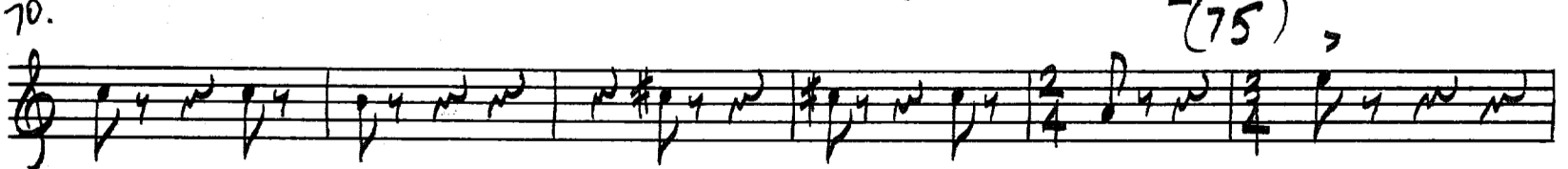
49.



56.



70.



Tenor Sax (p.6)



76. **2**  
mf

83.

89. (92)  
mf

95.

101. (104)

109. (118)  
mf

119.

124. (129)  
mf cresc. . . . . f

131.

138. (139)  
mp Tenor Sax (p.7)

146.

Musical staff 146, treble clef, 2/4 time signature. The staff contains a melodic line with eighth and quarter notes. A handwritten circled number (151) is written above the staff. The dynamic marking *p cresc. poco* is written below the staff.

153.

Musical staff 153, treble clef, 2/4 time signature. The staff contains a melodic line with eighth notes and rests. Handwritten accents (>) are placed above several notes. The dynamic marking *poco* is written below the first few notes, and *f* is written below later notes.

(162)

Musical staff 162, treble clef, 4/4 time signature. The staff contains a melodic line with quarter and eighth notes. A handwritten circled number (162) is written to the left of the staff. A handwritten number '2' is written below the first measure.

169.

Musical staff 169, treble clef, 4/4 time signature. The staff contains a melodic line with quarter and eighth notes. A handwritten circled number (174) is written above the staff.

176.

Musical staff 176, treble clef, 4/4 time signature. The staff contains a melodic line with quarter and eighth notes. A handwritten circled number (181) is written above the staff. The dynamic marking *p cresc.* is written below the staff.

183.

Musical staff 183, treble clef, 4/4 time signature. The staff contains a melodic line with quarter and eighth notes. A handwritten circled number (181) is written above the staff. The dynamic marking *f* is written below the staff.

192.

Musical staff 192, treble clef, 4/4 time signature. The staff contains a melodic line with quarter and eighth notes. The dynamic marking *f* is written below the first measure, and *ff* is written below the next two measures.

Empty musical staff with five lines.

Empty musical staff with five lines.

Tenor Sax (p. 8)

Empty musical staff with five lines.

