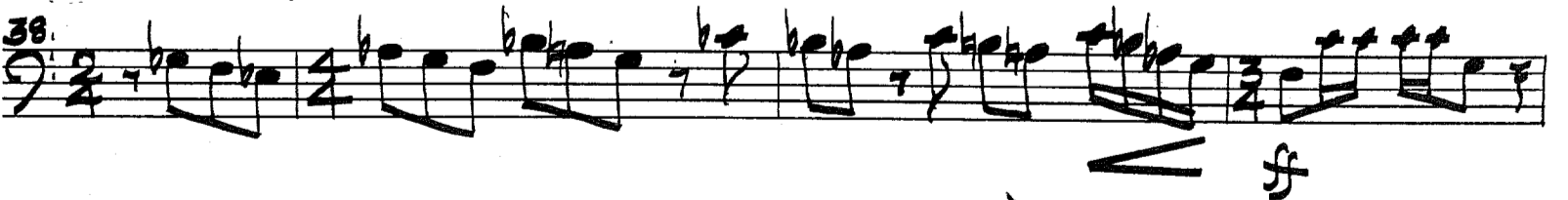
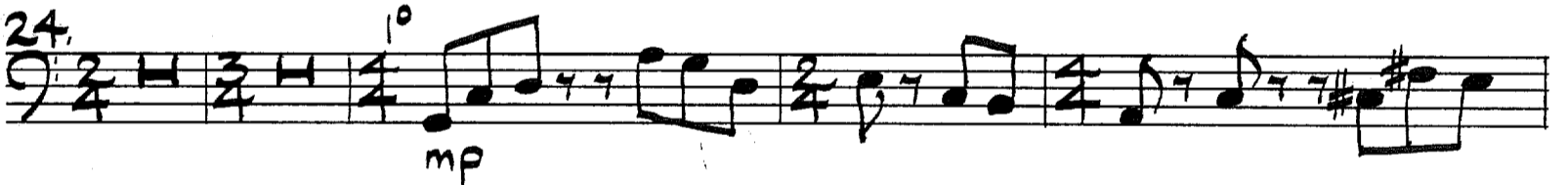
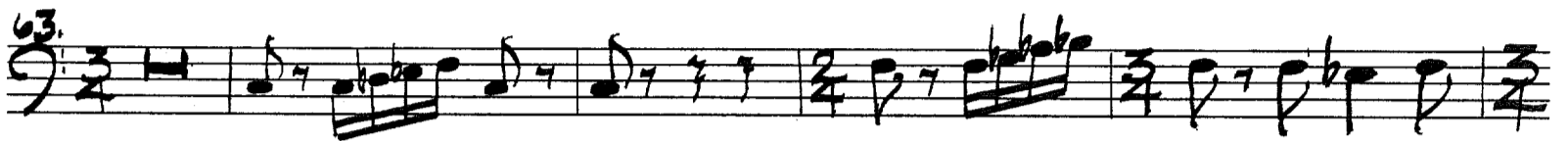


Euphonium



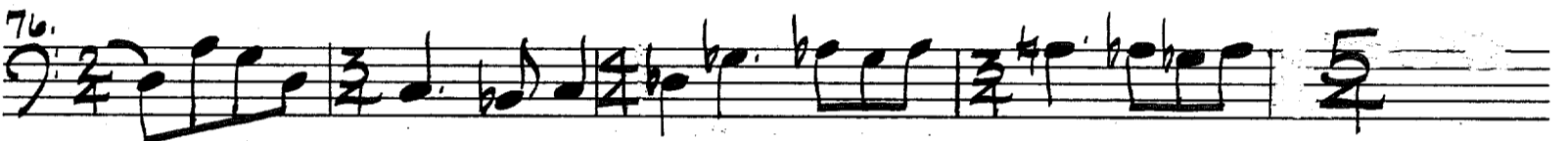
42. 

48. 

53. 

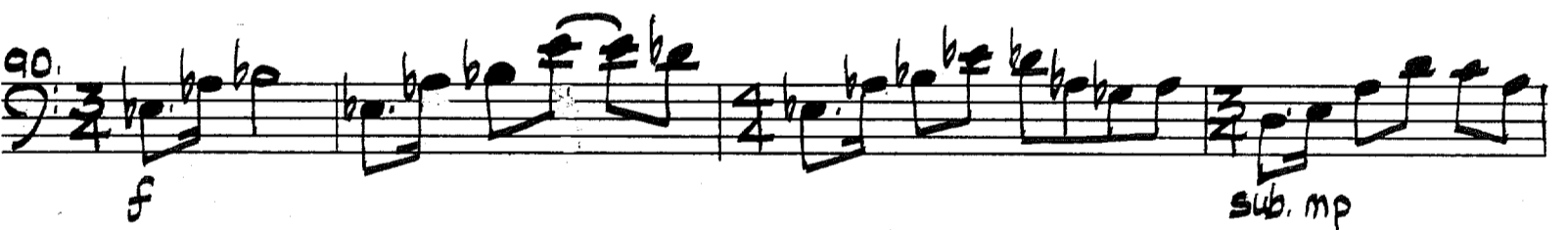
60. 

p

66. 

72. 

4/2/4/4/3

76. 

f *sub. mp*

82. 

cresc. *f*

88. 

p

94. 

Vi *mp*

109. $\frac{2}{3}$
mf

117. *mf*

121. *f* *mf*

126. $\frac{2}{3}$ / $\frac{3}{3}$

130. *f*

137. *mf* *f*

141.


145. *ff*

149. *mf*

154. *f* $\frac{3}{3}$

162. 
mf

168. 
mf

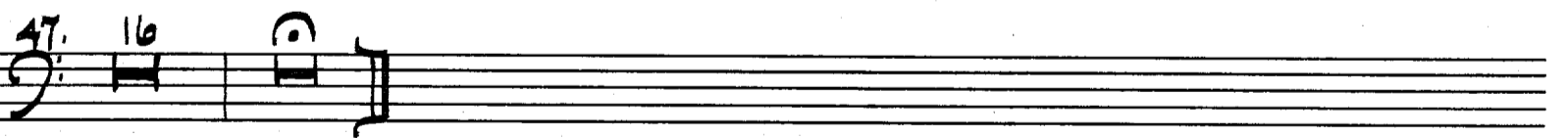
172. 
p

175. 
mf f

179. 
ff


p

28. 
mf

47. 

$\text{♩} = 54 = 6$ III

7. *Sotto ff*

Handwritten musical notation for measure 7 in bass clef, 3/4 time. It contains six eighth notes: G2, A2, B2, C3, D3, E3.

13. *mp*

Handwritten musical notation for measure 13 in bass clef, 3/4 time. It contains six eighth notes: G2, A2, B2, C3, D3, E3. A circled number (11) is written above the staff.

19.

Handwritten musical notation for measure 19 in bass clef, 3/4 time. It contains six eighth notes: G2, A2, B2, C3, D3, E3.

25. *p*

Handwritten musical notation for measure 25 in bass clef, 3/4 time. It contains six eighth notes: G2, A2, B2, C3, D3, E3. A circled number (23) is written above the staff.

32. *f*

Handwritten musical notation for measure 32 in bass clef, 3/4 time. It contains six eighth notes: G2, A2, B2, C3, D3, E3. A circled number (34) is written above the staff.

48. *mf*

Handwritten musical notation for measure 48 in bass clef, 3/4 time. It contains six eighth notes: G2, A2, B2, C3, D3, E3. Circled numbers (44) and (45) are written above the staff.

55. *q*

Handwritten musical notation for measure 55 in bass clef, 3/4 time. It contains six eighth notes: G2, A2, B2, C3, D3, E3. Circled numbers (58) and (68) are written above the staff.

69. *f mp*

Handwritten musical notation for measure 69 in bass clef, 3/4 time. It contains six eighth notes: G2, A2, B2, C3, D3, E3.

Euph. (p.)

Euph 2

(75)

7 2 3 2 2

(82)

mf

97.

103.

(104)

mf

110.

(118)

b.

mp cresc

(129)

mf

135.

(139)

mp

141.

147

(151)

11

Euph 2

162. ⁶ ² ² (174)

176. (181) *q*

190.

ff *ffz* *ffz*

Euph. 3