

Tuba

1. *f*

4. *mf*

8. *mf*

15.

22. *4/2/4/2*

34. *p* *cresc.* *#*

39. *f*

44.

Tuba

1. *f*

4. *mf*

8. *mf*

15.

22. *4/2/4/2*

34. *p* *cresc.* *#*

39. *f*

44.

63.



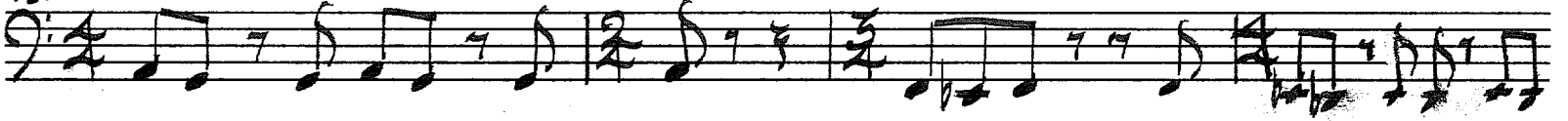
68.



72.



75.



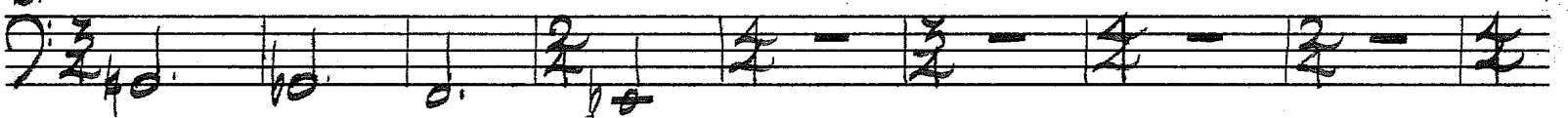
79.



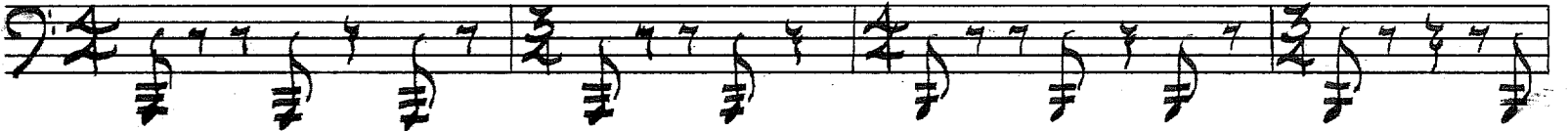
83.



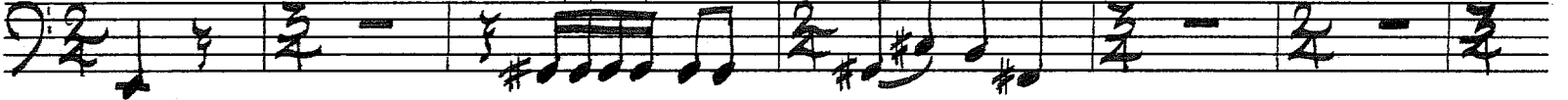
93.



101.



105.



111.



Tuba

1. *f*

4. *mf*

8. *mf*

15.

22. *4/2/4/2*

34. *p* *cresc.* *#*

39. *f*

44.

63.



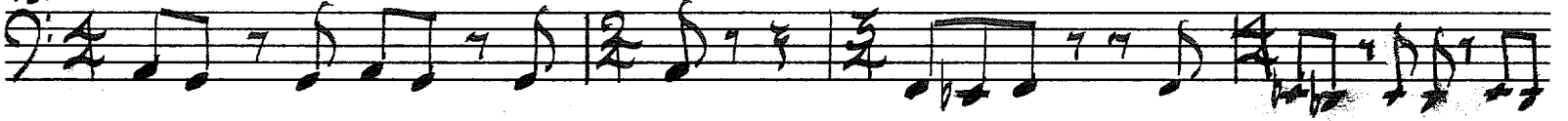
68.



72.



75.



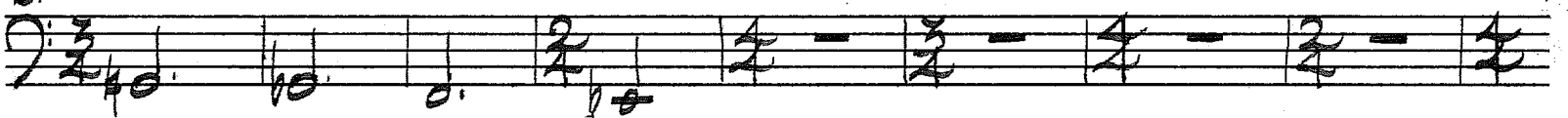
79.



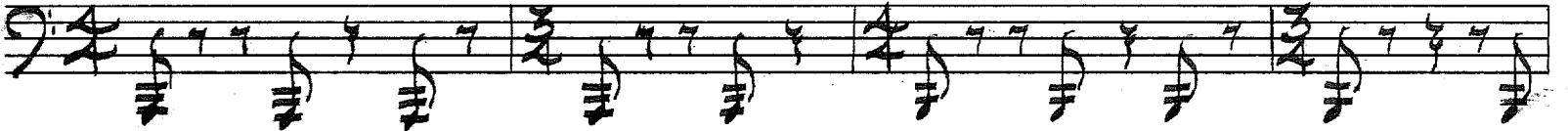
83.



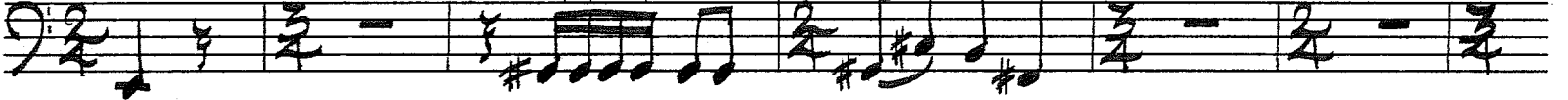
93.



101.



105.



111.



Tuba

1. *f*

4. *mf*

8. *mf*

15.

22. *4/2/4/2*

34. *p* *cresc.* *#*

39. *f*

44.

63.



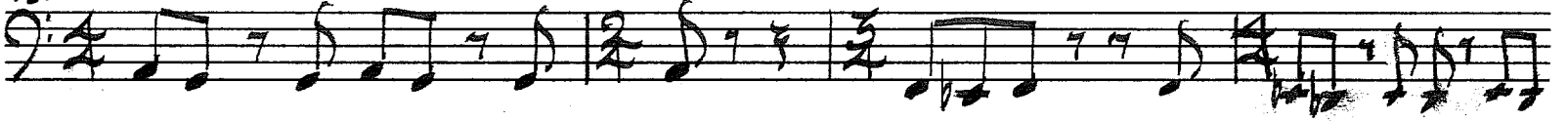
68.



72.



75.



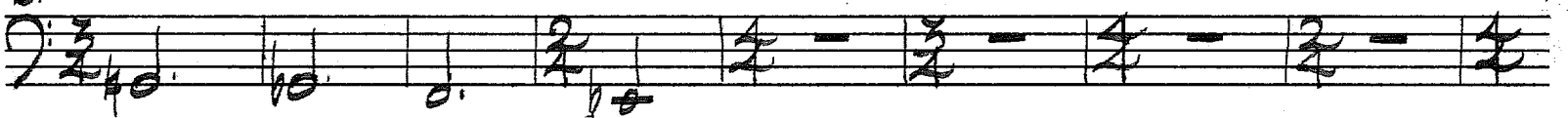
79.



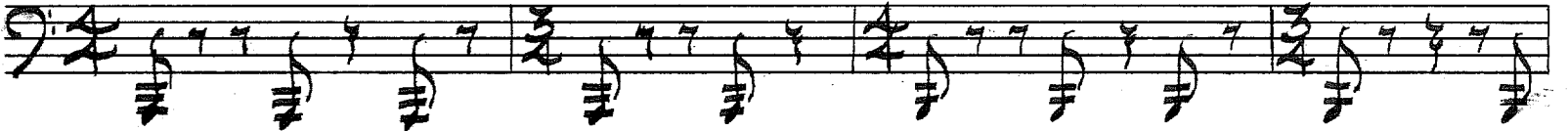
83.



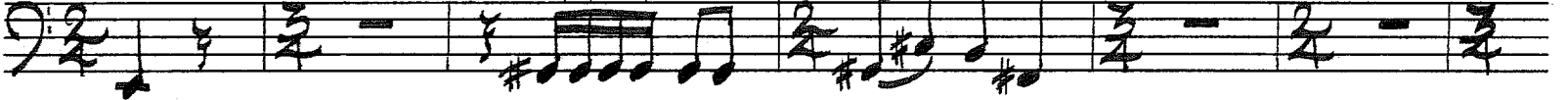
93.



101.



105.



111.



121.



126.



130.



137.



144.



149.



153.



156.



167.

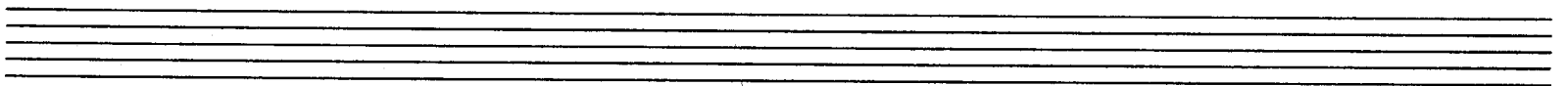


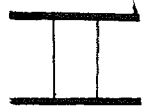
172.



175. 

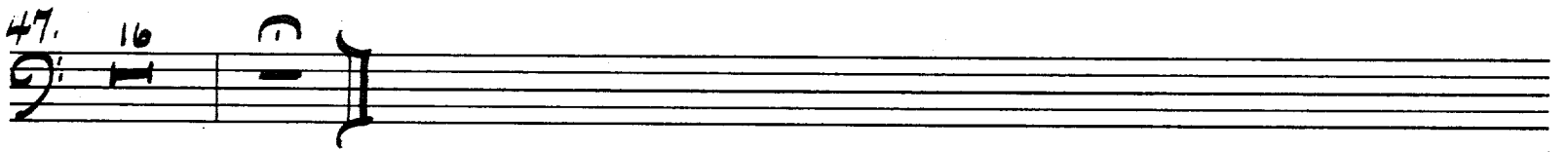
179. 

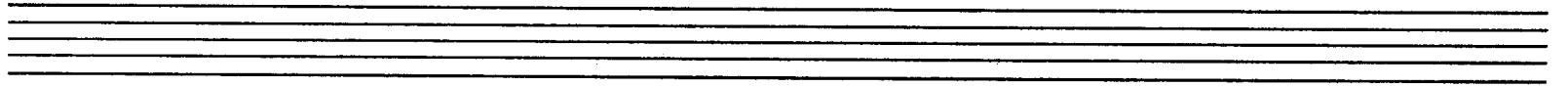


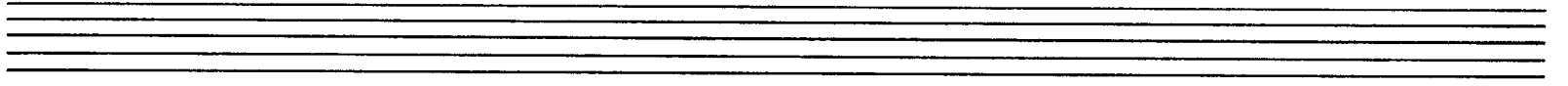


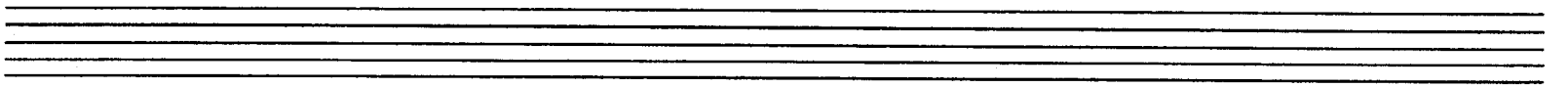
20. 

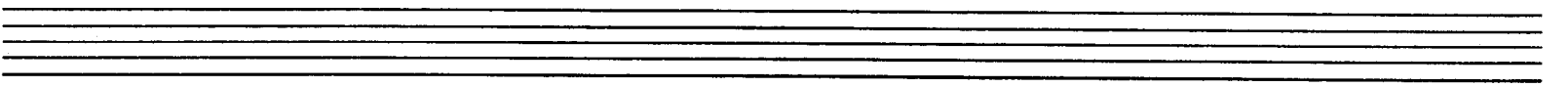
29. 

47. 16. 









Tuba

1. *f*

4. *mf*

8. *mf*

15.

22. $4/2/4/2$

34. *p* *cresc.* $\#$

39. *f*

44.

63.



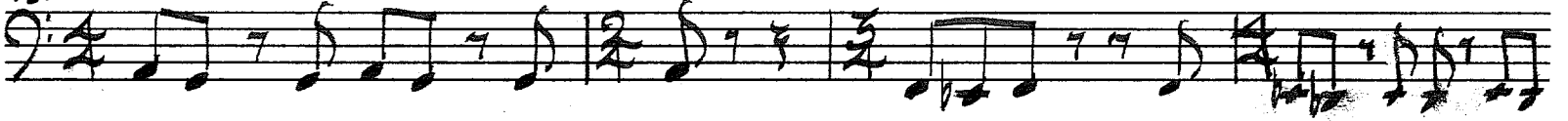
68.



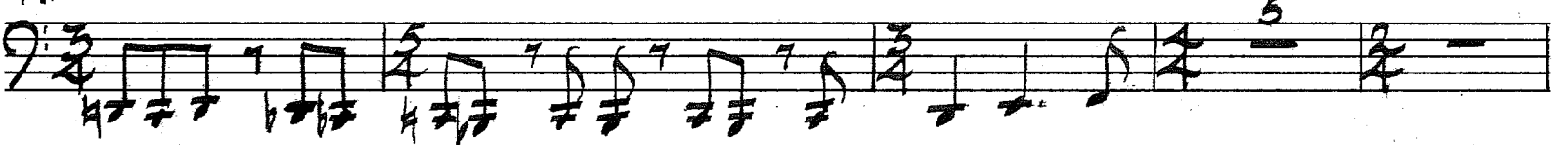
72.



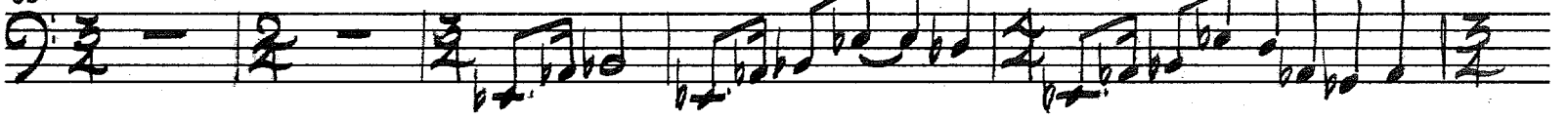
75.



79.



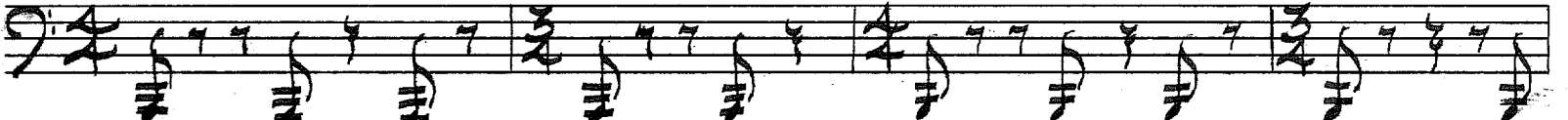
83.



93.



101.



105.



111.



121.



126.



130.



137.



144.



149.



153.



156.



167.



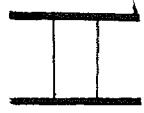
172.



175. Musical staff with notes and a fermata. The staff contains a sequence of eighth and sixteenth notes, ending with a fermata over a quarter note. A dynamic marking 'f' is present below the staff.

179. Musical staff with notes and a fermata. The staff contains a sequence of notes, ending with a fermata over a quarter note. A dynamic marking 'ff' is present below the staff.

Empty musical staff.



20 Musical staff with notes and a fermata. The staff contains a sequence of notes, ending with a fermata over a quarter note.

29 Musical staff with notes and a fermata. The staff contains a sequence of notes, ending with a fermata over a quarter note.

47. 16 Musical staff with notes and a fermata. The staff contains a sequence of notes, ending with a fermata over a quarter note.

Empty musical staff.

Empty musical staff.

Empty musical staff.

Empty musical staff.

♩ = 54-6

6. *secco* *mf* (10) *mp*

12. 5 4 (23) *p cresc. ---*

25. *f*

32. (34) || (45) *mf*

48.

54. (58) 9 *f*

(68) *mp*

(75) 7 2 3 2 2

Tuba (p.)

Tuba

1. *f*

4. *mf*

8. *mf*

15.

22. *4/2/4/2*

34. *p* *cresc.* *#*

39. *f*

44.

63.



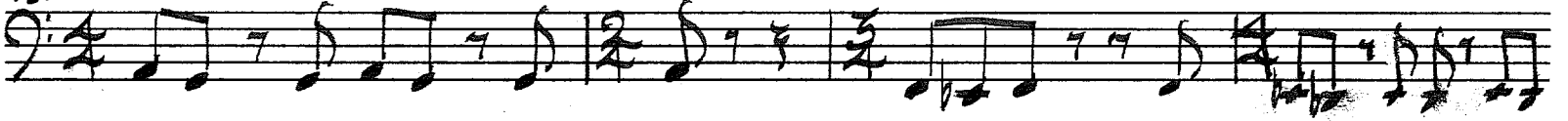
68.



72.



75.



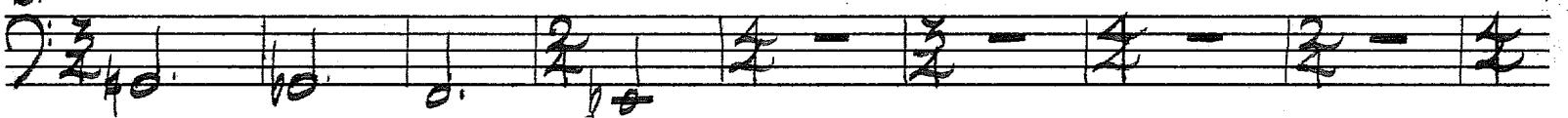
79.



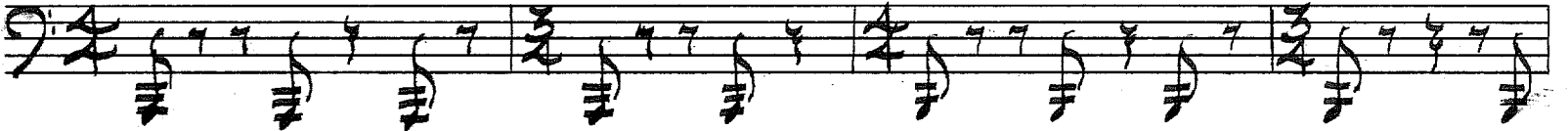
83.



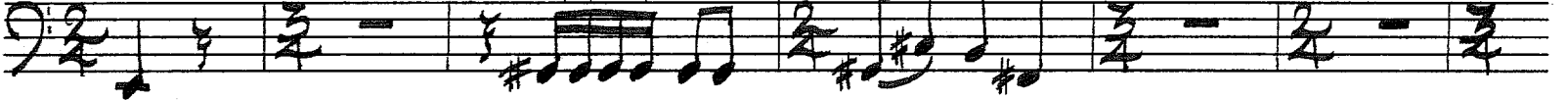
93.



101.



105.



111.



121.



126.



130.



137.



144.



149.



153.



156.



167.



172.



175. 

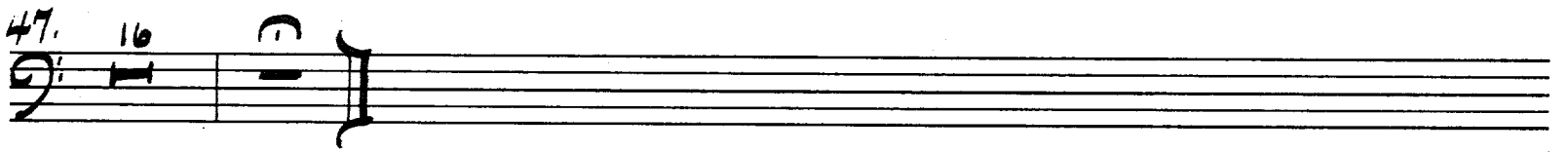
179. 

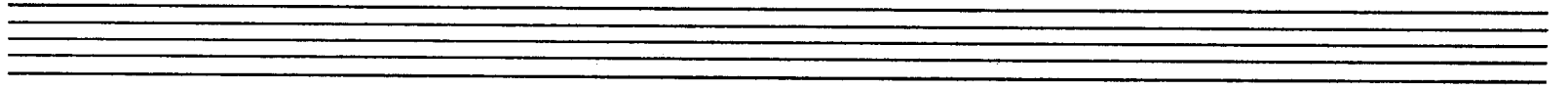


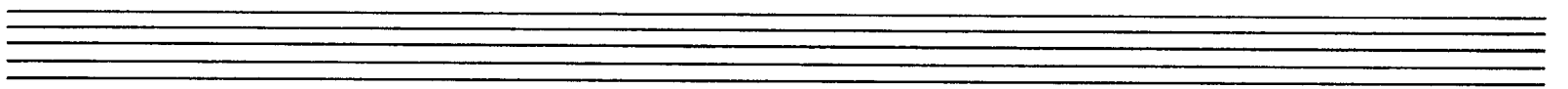
II

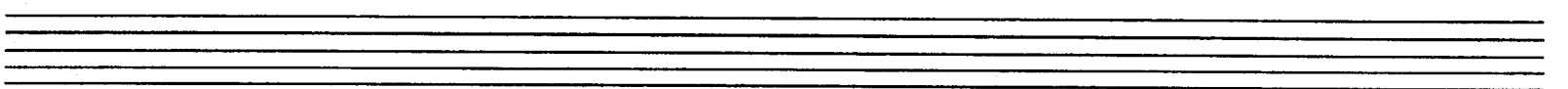
20 

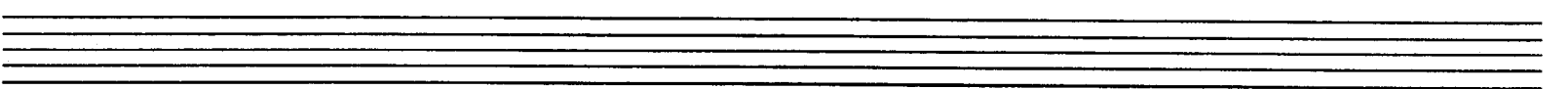
29 

47. 16 









♩ = 54-6

6. *secco* *mf* (10) *mp*

12. 5 4 (23) *p cresc. ---*

25. *f*

32. (34) || (45) *mf*

48.

54. (58) 9 *f*

(68) *mp*

(75) 7 2 3 2 2

Tuba (p.)

(92)

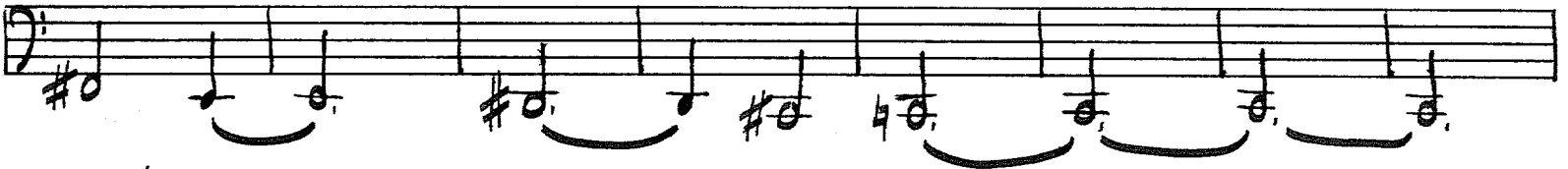


97.

7 (104)

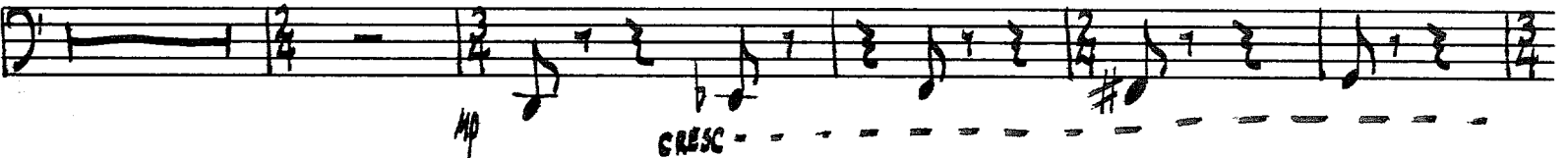


110.

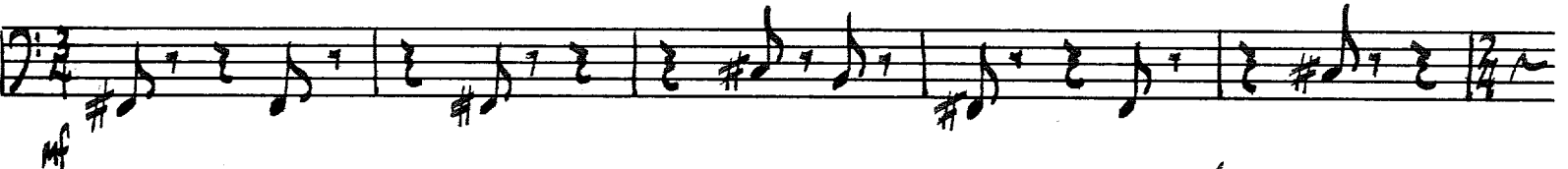


(118)

6



(129)



134.

(139)



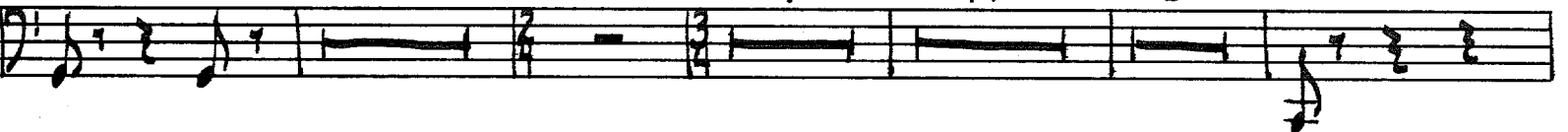
140.

5

4 (151)

11

(162) 6



169.

2

2 (174)



178.

(181) 9

2



193.

